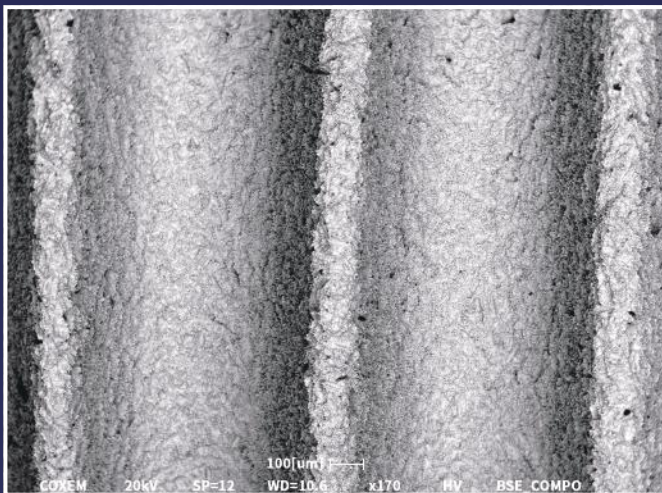
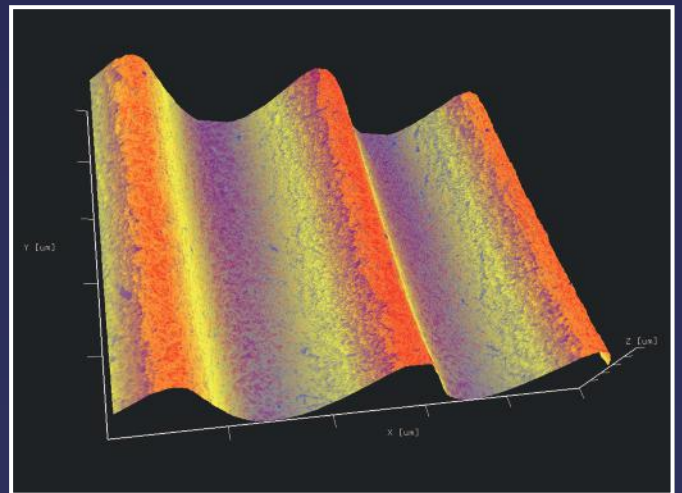


Go Deep, with Deep 3D

Before



After

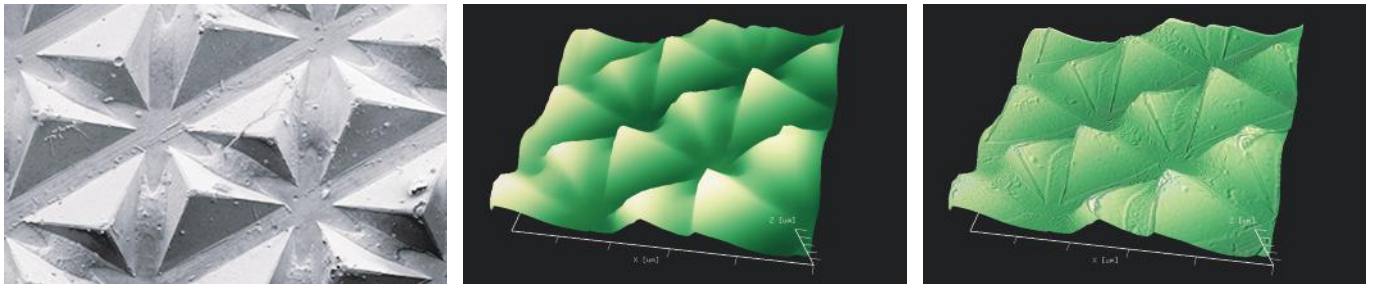


Deep 3D reconstructs flat SEM images into intuitive 3D, revealing depth and shape of microstructures more clearly.

Deep 3D transforms your SEM workflow by enabling fast and easy 3D reconstruction - all from a single image.

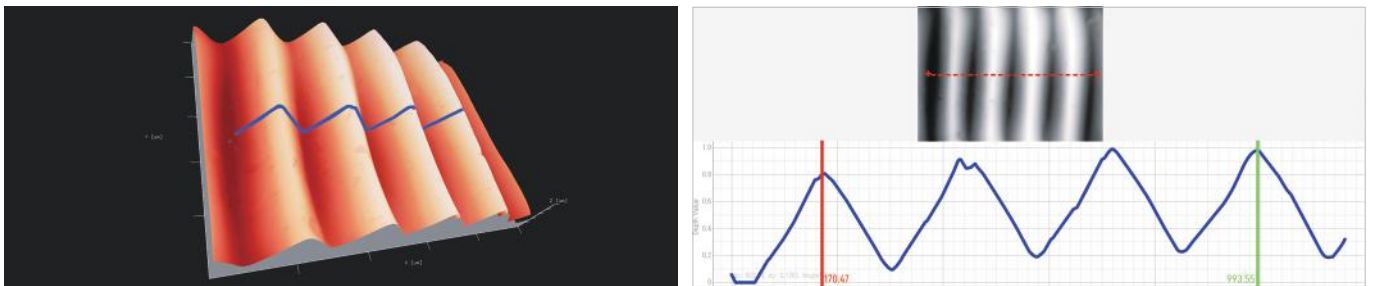
One-shot 3D Imaging

No need for multiple steps. Capture a single BSE image and instantly reconstruct a 3D surface.



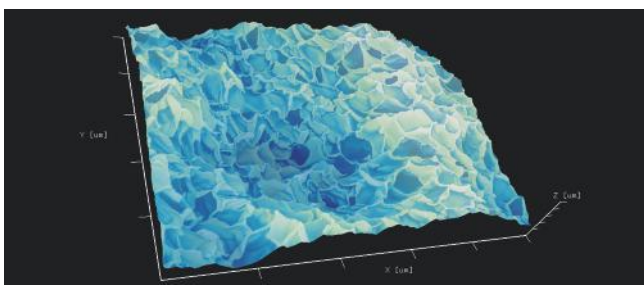
Line Profile Measurement

Draw a line. Get the depth. Simply draw a line across the image to generate height profiles for precise topographic analysis.



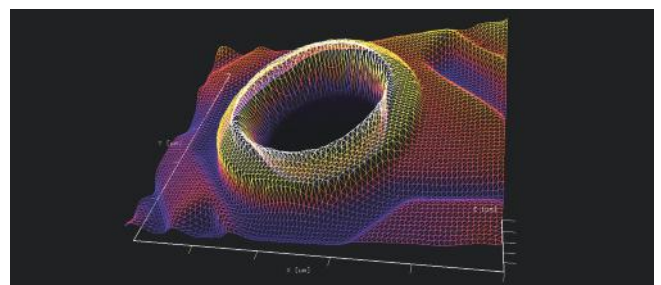
Texture Overlay

Bring realism into your 3D. Overlay the texture of the original SEM image onto your 3D surface to enhance visual clarity and material context.



Wireframe Display

Highlight surface gradients. Add wireframe overlays to visualize depth, slope, and microstructure transitions.



STL Export for CAD Integration

Seamless 3D data portability. Export 3D surfaces as STL files for use in CAD, simulation, or additive manufacturing software.

Request your free demo with our SEM today.



We used certified FSC recycled paper.

COXEM Co., Ltd.

WEB. www.coxem.com

E-MAIL. info@coxem.com

worldwide locations